

A woman with long brown hair is lying on her side on a white, wrinkled sheet. She is wearing a red, long-sleeved, sheer dress with ruffles. She is looking towards the camera with a slight smile. Her legs are bent and raised in the air.

MESMO®

fine microtextured implants



POLYTECH

*smooth or textured
– why compromise?*

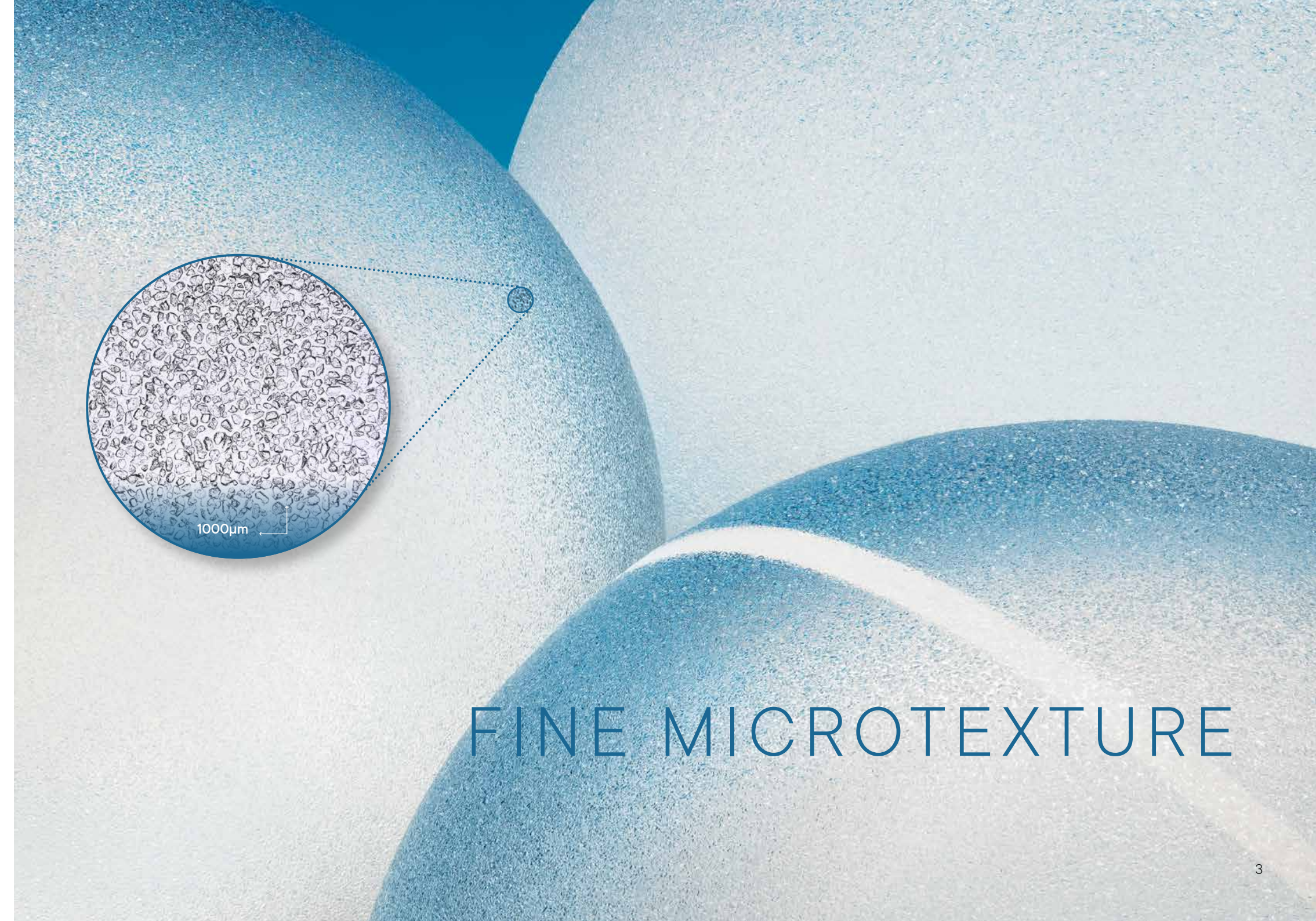
MESMO®

fine microtextured implants

Implant texture is an important element to achieve desired aesthetic outcome and patient satisfaction

Textured implants are **superior to smooth implants** in the following aspects:

- **Low complication rates** including rotation, flipping and bottoming out¹
- Controlled implant position even with anatomical implants²
- **Long-lasting aesthetic results**, even with larger implant sizes of more than 350 ml¹



FINE MICROTEXTURE

WHEN IMPLANT CHOICE REQUIRES MICROTEXTURE

- The choice of texture depends on your **patient's needs** and their anatomy
- The surface of the implant has an impact on the capsule and **how it forms**
- **Fine microtextured implants are preferred** by many surgeons to support the implants interaction with the tissues. This interaction has been associated with a **reduction in complications** such as bottoming out (particularly with implants over 350 ml) as well as implant flipping and rotation¹
- **Smooth implants** are associated with **no tissue adherence** which can **lead to complications** over time especially with larger volumes¹

A woman with long brown hair is lying on a bed with white linens. She is looking directly at the camera with a slight smile. Her right hand is resting on her head, and her left arm is bent with her hand near her chest. The lighting is soft and warm, creating a relaxed and intimate atmosphere.

TEXTURED VS. SMOOTH –
WHY COMPROMISE?

Arithmetic Roughness (Sa) of surfaces *



*MESMO® implants are classified as microtextured according to the internationally recognised ISO Standard 14607-2018 allowing safe and compliant international commercialisation

COMBINING THE BENEFITS OF SMOOTH AND TEXTURED

- Textured implants are associated with a lower number of complications when compared with smooth breast implants¹
- As described by Paolo Montemurro and Vincent K.S. Tay smooth implants have special requirements for patient selection:
 - » Good tissue quality
 - » Implant size < 350 ml
 - » Surgical technique
 - » Specific aftercare

» » » **MESMO® fine microtextured** implants have been used for almost a decade in both round and anatomical shapes without any of these limitations.



PATIENT SATISFACTION

Hundreds of thousands of patients have been successfully operated with MESMO® surfaced implants worldwide:

94%

reported that
their breasts had
a soft & natural feel⁷

97%

were satisfied or
very satisfied with the
aesthetic result⁷

98%

reported an improved
or stable quality of life⁷

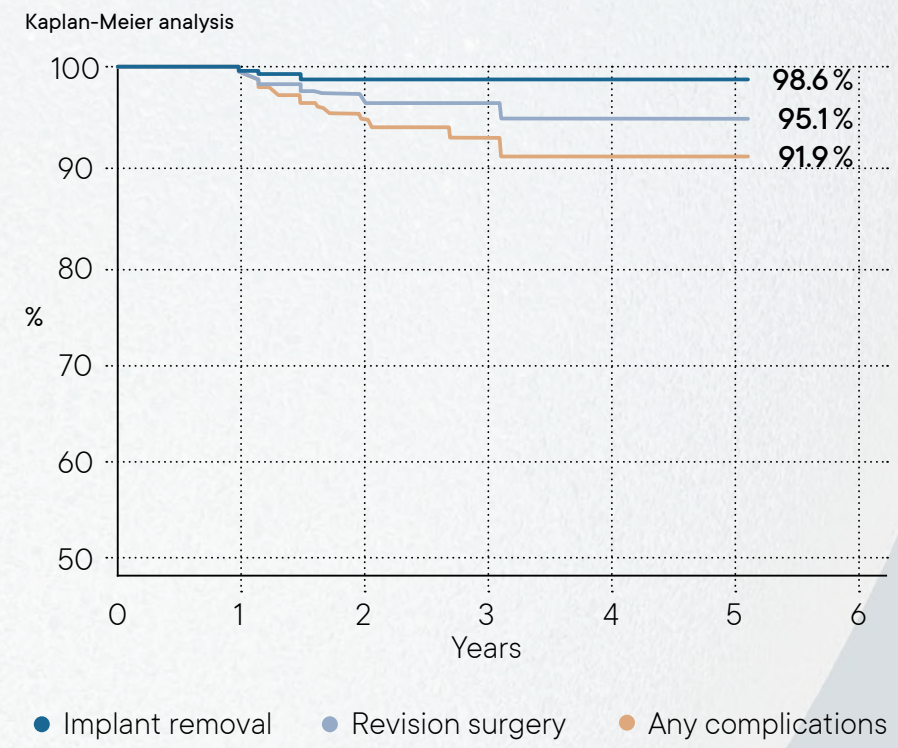
MESMO® complication rates⁷

all types of surgery*	
Complications rates (%) at 5 years	MESMO® All Types N = 308
Any complication	8.1%
Revision surgery	4.9%
Implant removal	1.4%
Capsular Contracture (Baker grade III-IV)	0.4%

* All types of surgery include primary augmentation, primary reconstruction and revision surgery

As of March 2021 there have been no cases of BIA-ALCL reported with MESMO®.

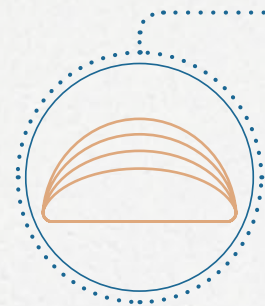
Cumulative probability of being complication free⁷



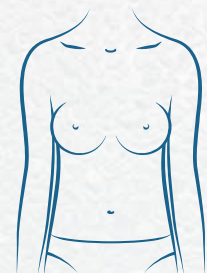
HIGH AND PROVEN SAFETY
PROFILE IS A KEY DEMAND
FOR EVERY SURGEON

92% of patients **completely complication free** after 5 years⁷

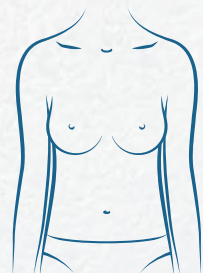
MESMO® PRODUCT PORTFOLIO



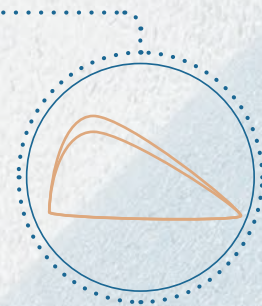
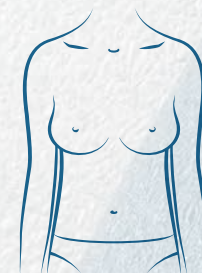
Même®
round base
central projection



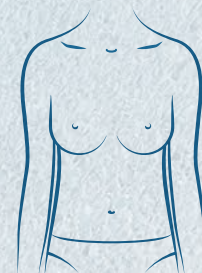
Replicon®
round based
anatomical projection



Opticon®
short base
anatomical projection



Optimam®
oblong base
anatomical projection



250
Options for
the surgeon's
choice

CHOOSING THE RIGHT MESMO® IMPLANT FOR YOUR PATIENT

- Make your precise **implant choice** now
Get started with Polyfind! app today
- Get your latest hard printed product catalogue
Ask your local POLYTECH representative

Become part of the
MESMO® success story!

Download the
POLYfind! app now



Contact your local POLYTECH representative for access

A photograph of two women with long brown hair, wearing black dresses, embracing each other. The woman on the left is looking towards the camera, while the woman on the right is looking slightly away.

EMBRACING UNIQUENESS AND CHOICE



Success for me is delivering consistent and long-term patient satisfaction. In selecting an implant I need versatility and predictability to meet the challenges I see everyday in my practice. For this reason, MESMO® is the implant I choose in the majority of my breast augmentations.

DR. PAOLO MONTEMURRO



As surgeons we strive for achieving long term aesthetics results whilst minimising complications. The MESMO® surface gives me the optimum balance of texture for my patients.

DR. JOSE LUIS MARTIN DEL YERRO

IMPLANTS OF EXCELLENCE PROGRAMME FOR MESMO®

Established in 2007 this extended warranty programme offers your patients specific benefits and peace of mind. *

Benefits of the programme



Support patient confidence and engagement



Patients participate in an annual survey contributing to further innovation and patient safety



Lifetime implant replacement in the event of material related rupture



An opportunity for patients to stay in touch

See Warranty
Terms and
Conditions



* See Warranty Terms and Conditions on
<https://polytech-health-aesthetics.com/en/warranty>





YOUR SUCCESS
IS OUR SUCCESS

HAVING CHOICES IS KEY TO ANY SURGEON'S SUCCESS

For over 35 years at POLYTECH we have lived by a simple truth,
we can only be successful if our surgeons are successful.

Our MESMO® implant choices
respect and embrace uniqueness

Regular MESMO® users confirm that the high variety of implants
helps them to strive for their personal success by:

- Delivering very high patient satisfaction
- Having extremely low complication rates
- Meeting the demand for minimally textured implants
- Differentiating their practice and driving business growth

References

- ¹ P. Montemurro et al: Aesthetic Surgery Journal 2020, p. 1 – 7; DOI: 10.1093/asj/sjaa169
- ² Calobrace et al., Long-Term Safety of Textured and Smooth Breast Implants, Aesthetic Surgery Journal, 2017, 1–11 ; DOI 10.1093/asj/sjx157
- ³ POLYTECH, data on file
- ⁴ Motiva Masterclass, Evolution of Breast Implants, Turkish National Congress, January 2020
- ⁵ PERLE™ Physician Brochure „The Art of Science“, 2020, p. 4
- ⁶ Wixrom R N et al. Aesth Surg J, 2019, 1–7; DOI 10.1093/asj/sjz153
- ⁷ Implants of Excellence, Annual Survey 2014 – 2019, POLYTECH, data on file

POLYTECH Health & Aesthetics GmbH
Alzheimer Str. 32
64807 Dieburg | Germany
Tel.: +49 (0) 6071 98630
Fax: +49 (0) 6071 986330
E-Mail: info@polytechhealth.com

For further information visit us at:
www.polytechhealth.com

Follow us on

